

QUANTOFIX[®] Chloride

en

Pack content:

1 aluminum container with 100 test strips

Measuring range:

0–3000 mg/L Cl⁻

Color gradation:

0 · 500 · 1000 · 1500 · 2000 · 3000 mg/L Cl⁻

General indications:

Remove only as many test strips as are required. Close the container immediately after removing a strip. Do not touch the test fields.

Additional indications:

If the sample solution has a pH value of 2–12, the reaction will take place without interferences. Strongly acid solutions must be buffered with caustic soda, and alkaline solutions with nitric acid to a pH of 5–7. If the test strip shows a value of 3000 mg/L, the concentration of chloride ions may actually be higher. In this case, we recommend carrying out a stepwise dilution of the sample with distilled water in a ratio of 1:5, to bring the chloride content into the measuring range of the test paper. The test fields may change after the reaction time has elapsed. This has no relevance for the reading and does not indicate any malfunction of the test strip.

Instructions for use:

1. Dip the test strip with all test fields into the test solution for 1 second.
2. Shake off excess liquid.
3. Wait 60 seconds.
4. Compare with the color scale.

Interferences:

The following ions interfere with the reading only above the indicated concentrations:

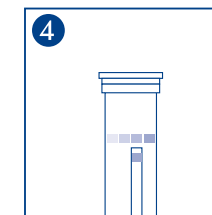
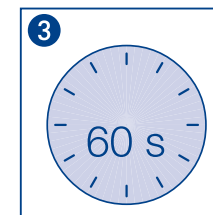
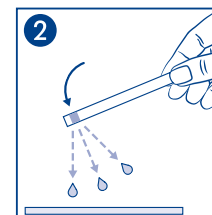
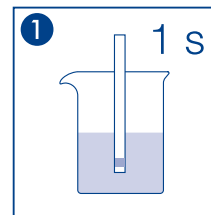
> 1000 mg/L Al³⁺, Ca²⁺, Cd²⁺, Ce⁴⁺, Cu²⁺, K⁺, Mg²⁺, Mn²⁺, Na⁺, NH₄⁺, Ni²⁺, Pb²⁺, Sn²⁺, Zn²⁺, BO₃⁻, CO₃²⁻, CrO₄²⁻, NO₂⁻, NO₃⁻, PO₄³⁻, SO₃²⁻, SO₄²⁻, acetate, citrate, oxalate, tartrate, EDTA, > 500 mg/L Fe²⁺, Fe³⁺, > 200 mg/L I⁻, > 100 mg/L Ag⁺, Br⁻, SCN⁻, > 75 mg/L Hg²⁺, > 20 mg/L CN⁻, S₂O₃²⁻, > 10 mg/L S²⁻, ascorbate.

Disposal:

Information regarding disposal can be found in the safety data sheet. You can download the SDS from www.mn-net.com/SDS.

Storage:

Avoid exposing the strips to sunlight and moisture. Keep container cool and dry (storage temperature 2–8 °C). If correctly stored, the test strips may be used until the use-by-date printed on the packaging.



REF	Artikelnummer / Item number / Référence produit / Referencia / Artikelnummer / Numero di catalogo / Numer artykułu	LOT	Chargencode / Batch identification / Numéro de lot / Código de lote / Productienummer / Codice del lotto / Numer partii
	Achtung! / Warning! / Attention! / ¡Atención! / Let op! / Attenzione! / Uwaga!		Verwendbar bis / Use by / À utiliser avant / Fecha de caducidad / Te gebruiken tot / Utilizzare entro (anno / mese) / Przydatność do użycia
	Temperaturbegrenzung / Permitted storage temperature range / Limites de température / Límites de temperatura / Temperatuurbegrenzung / Limite de temperatura / Ograniczenie temperatury		Trocken aufbewahren / Store in a dry place / Conserver au sec / Mantener seco / Op een droge plaats bewaren / Mantenere asciutto / Przechowywać w suchym miejscu
	Gebrauchsanweisung beachten / Please read instructions for use / Respecter les instructions d'utilisation / Obsérvense las instrucciones de uso / Lees de bijsluiter / Consultare le istruzioni per l'uso / Przestrzegać instrukcję użycia		Packung geschlossen halten / Keep container closed / Refermer la boîte / Mantenga el envase cerrado / Verpakking gesloten houden / Conservare la confezione chiusa / Przechowywać pojemnik szczelnie zamknięty
	Ausreichend für <n> Prüfungen / Contains sufficient for <n> tests / Contenu suffisant pour <n> tests / Contenido suficiente para <n> tests / Voldoende voor <n> tests / Contenuto sufficiente per <n> test / Wystarczająco dla kontroli <n>		