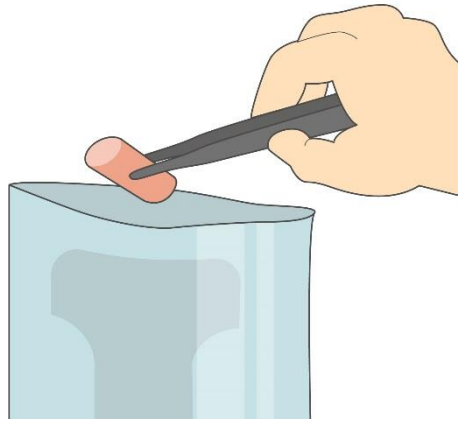


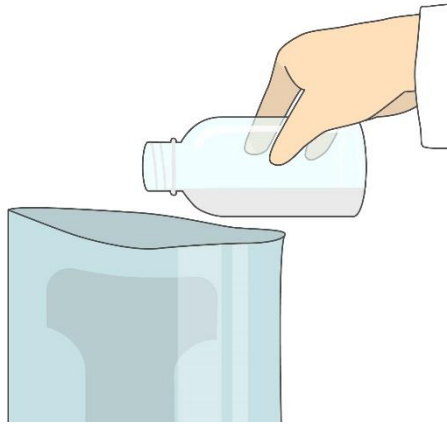
Nissui Pharmaceutical Co., Ltd.

CompactDry “Nissui” YMR Illustration Manual

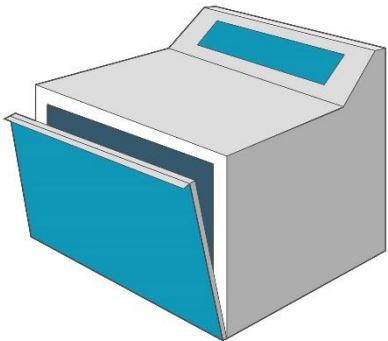


Weigh 50g solid sample

and add 450mL 0.1% peptone water or MRD to the sample.

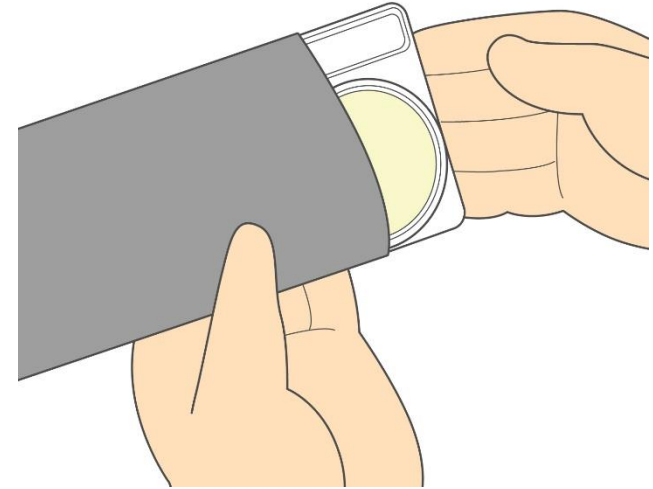


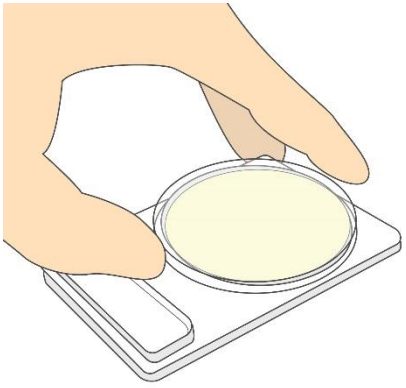
It is recommended to use a stomacher bag with filter to eliminate risks of carry over of tiny pieces of foodstuffs into the surface of the medium.



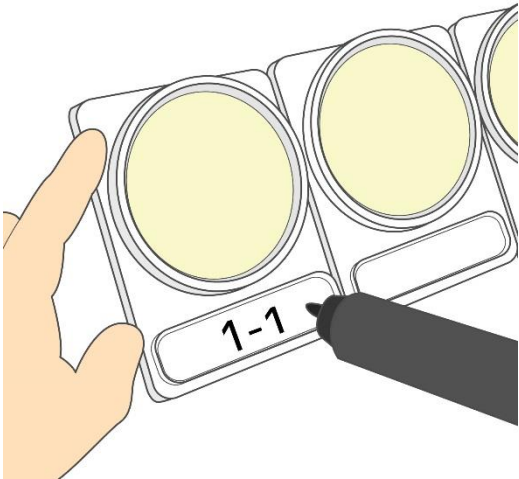
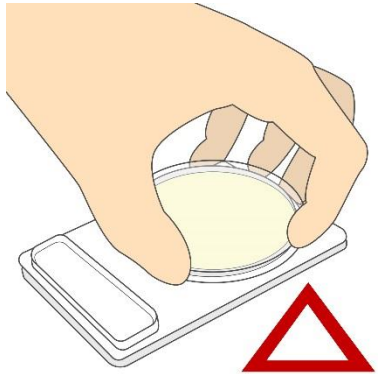
Homogenize this mixed sample by a blender

Open aluminum bag, and take out a set of 4 plates.

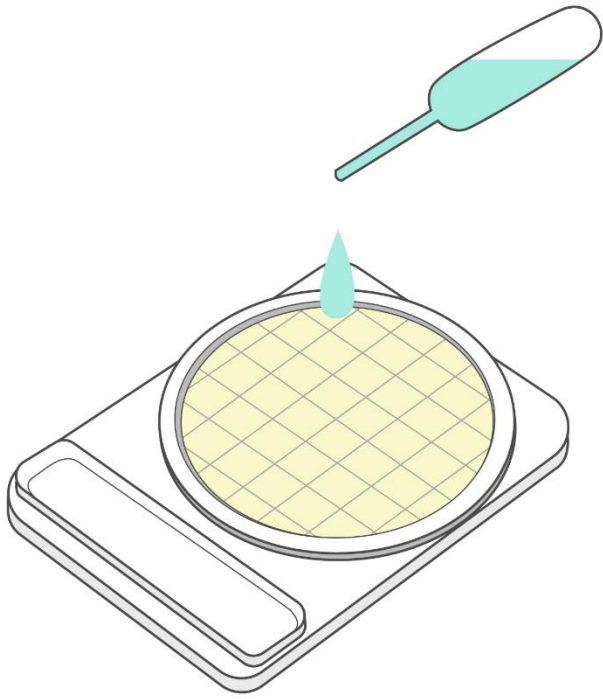




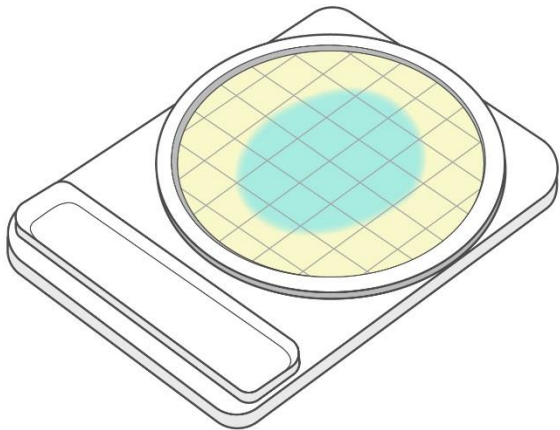
Take off the cap of the plate



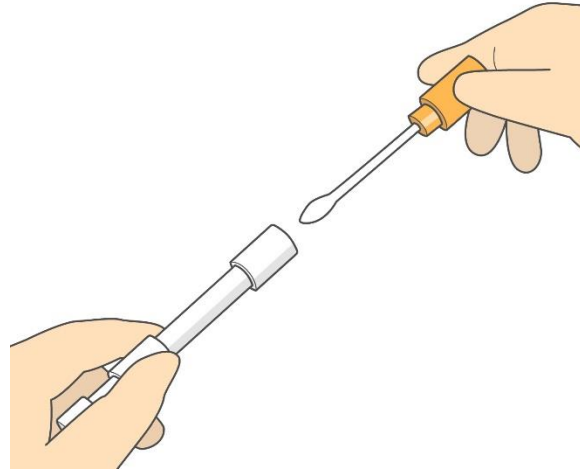
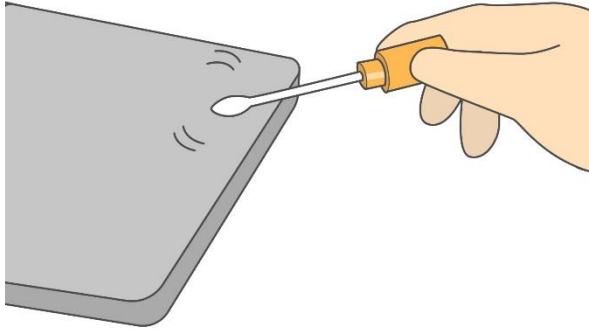
Write the appropriate information on the memorandum section.



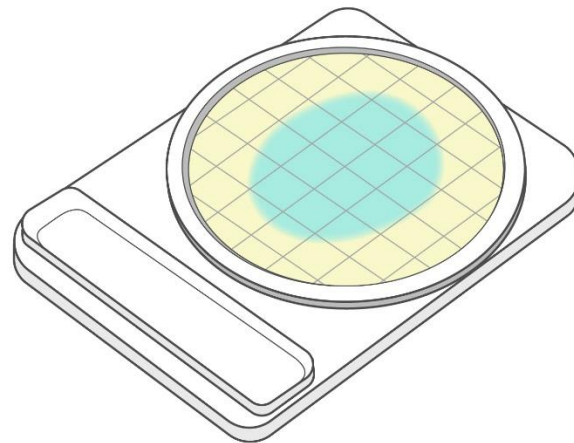
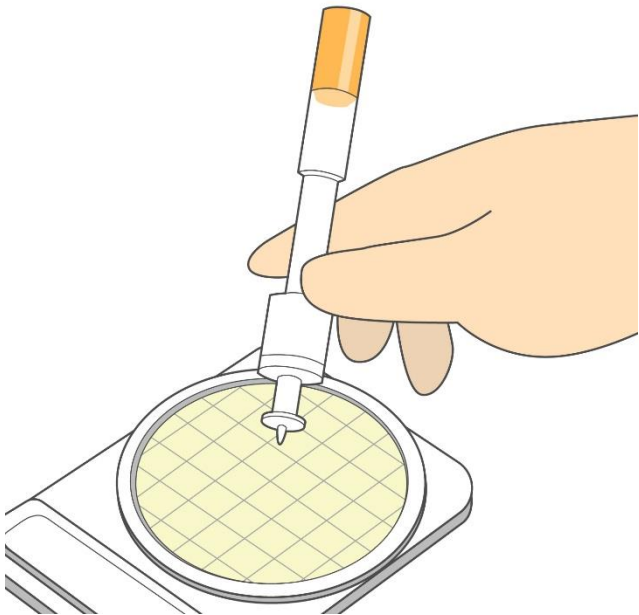
Pipette 1ml of homogenized specimen (to be further diluted if necessary) in the middle of dry sheet of Compact Dry YMR.



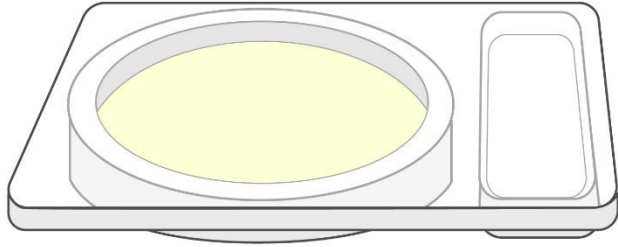
Specimen diffuses automatically and evenly into all over the sheet (total medium of 20 cm²) to transform it into gel within seconds.



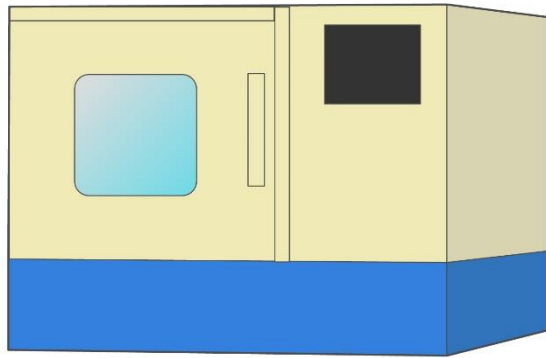
Viabile count in swab
test sample



Inoculate 1 ml of
wiping solution (to be
diluted if necessary),
which is obtained from
cotton swab,



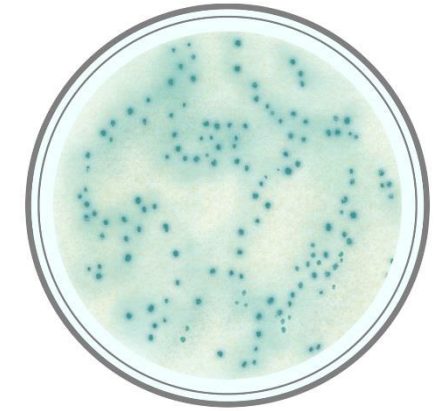
Turn over the plate capped



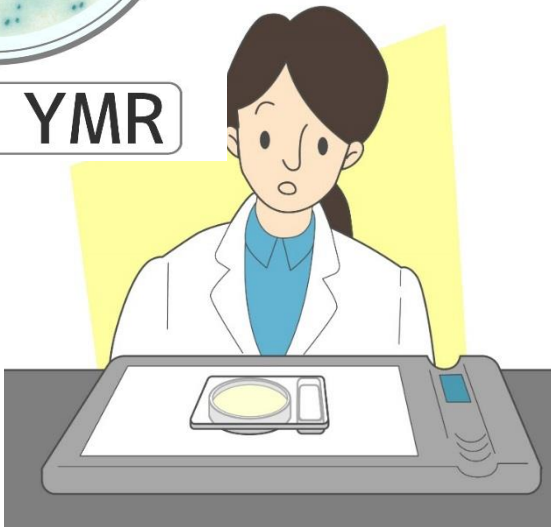
put in an incubator.
Incubate 2-3 days for YMR at 25-28°C.



YMR



YMR



Yeasts and molds form green/blue colonies, while, most colonies are some shade of green/blue. Any colored colony should be counted. Mold colonies may have a diffuse or cottony appearance.

Detection limit of Compact Dry YMR is between 1 – 150 cfu/plate.

From backside of the plate, count the number of colored colonies appeared in the medium. White paper placed under the plate can help to count colonies easier.