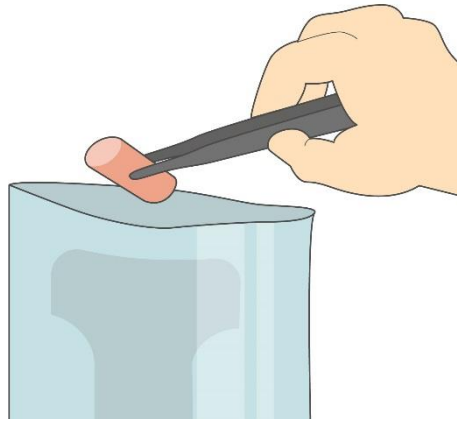


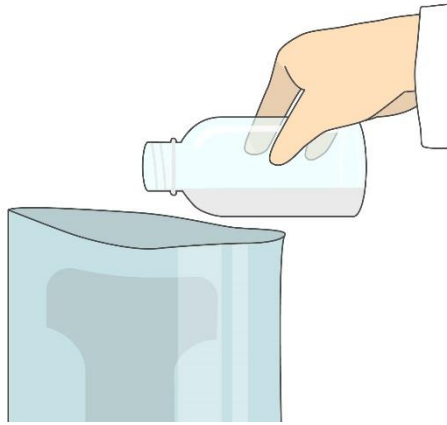
*Nissui Pharmaceutical Co., Ltd.*

# CompactDry “Nissui” CF Illustration Manual

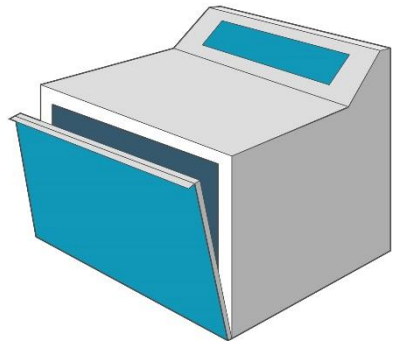


Weigh 50g solid sample

and add 450mL Butterfield's buffered phosphate diluent to the sample.

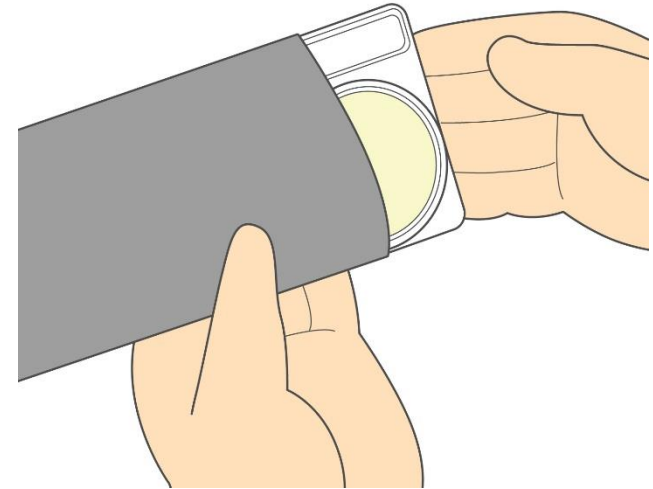
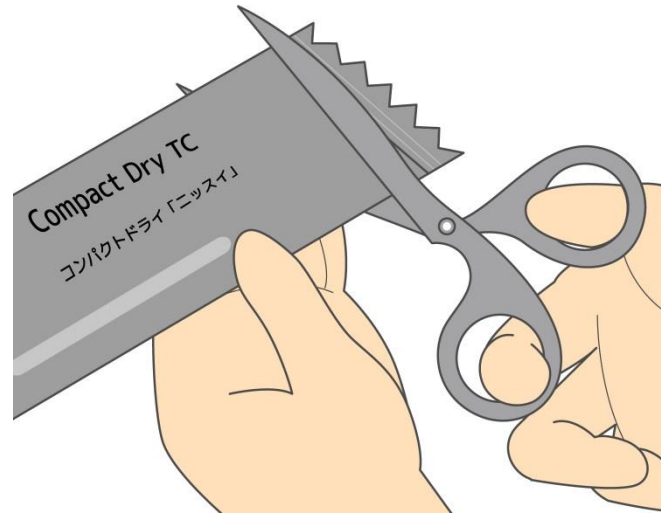


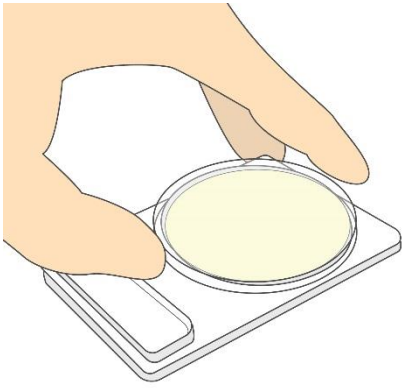
It is recommended to use a stomacher bag with filter to eliminate risks of carry over of tiny pieces of foodstuffs into the surface of the medium.



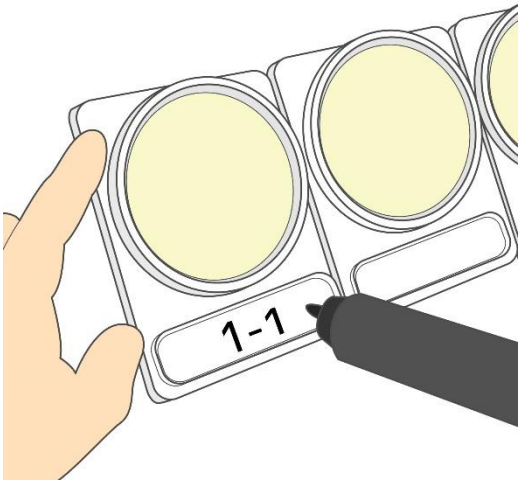
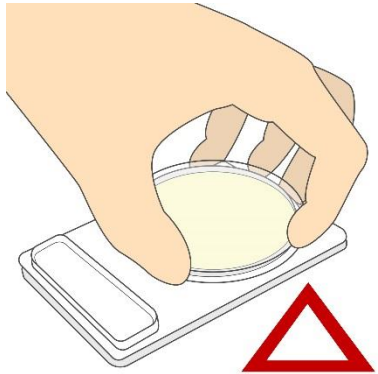
Homogenize this mixed sample by a blender

Open aluminum bag, and take out a set of 4 plates.

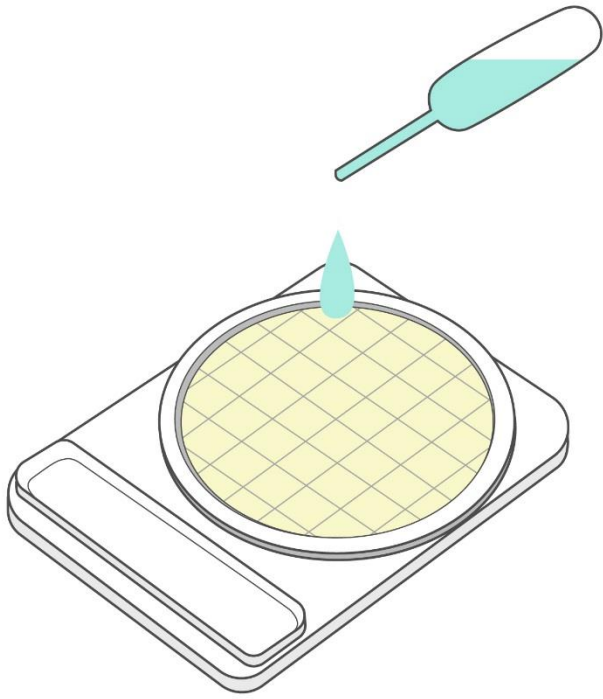




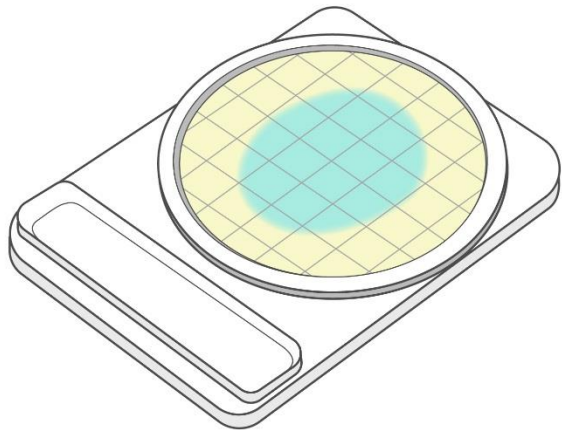
Take off the cap of the plate



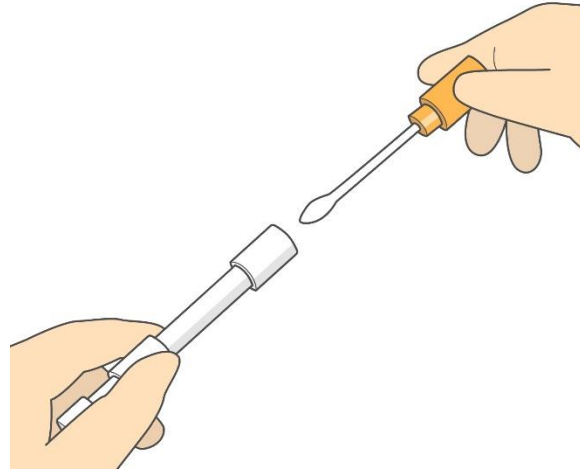
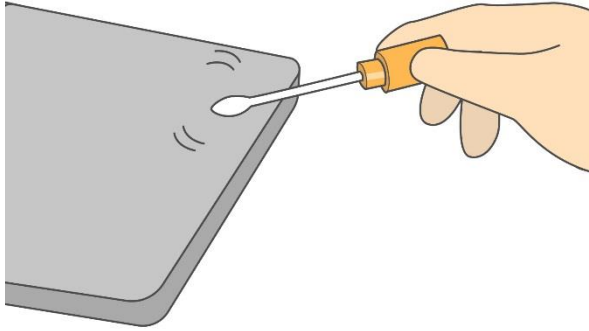
Write the appropriate information on the memorandum section.



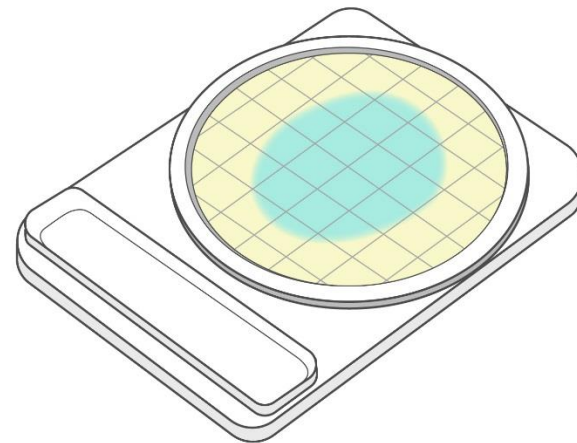
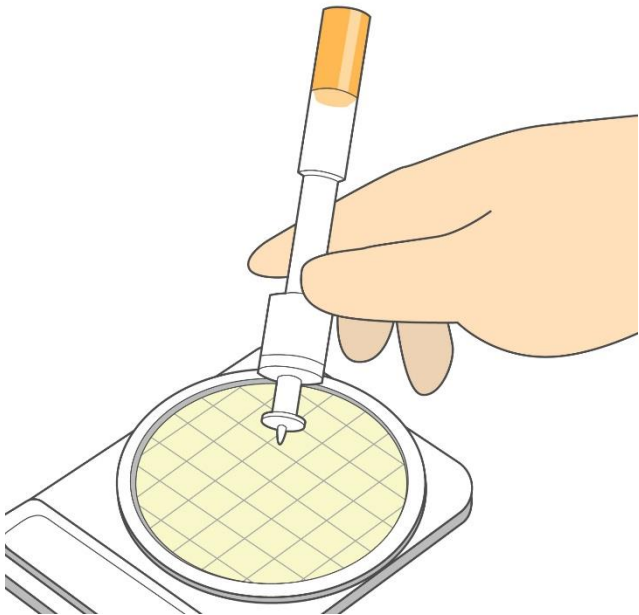
Pipette 1ml of homogenized specimen (to be further diluted if necessary) in the middle of dry sheet of Compact Dry CF.



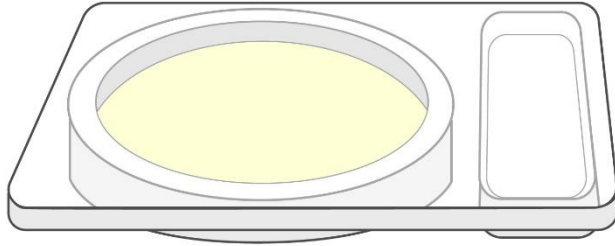
Specimen diffuses automatically and evenly into all over the sheet (total medium of 20 cm<sup>2</sup>) to transform it into gel within seconds.



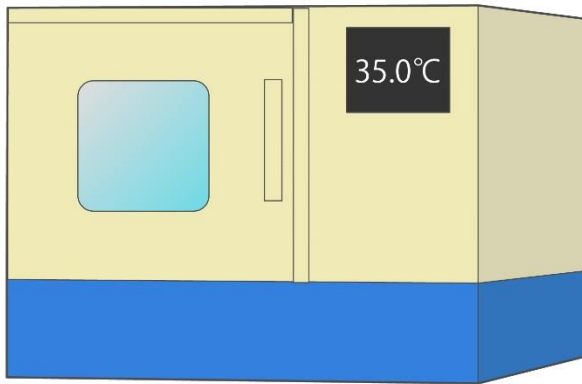
Viable count in swab  
test sample



Inoculate 1 ml of  
wiping solution (to be  
diluted if necessary),  
which is obtained from  
cotton swab,



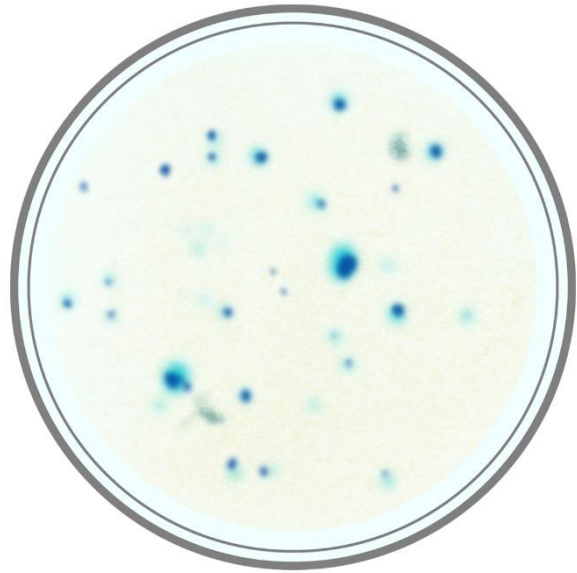
Turn over the plate capped



put in an incubator.

Incubate 24 hours for CF at  $35 \pm 2^{\circ}\text{C}$ .





CF

Coliform grow to develop blue/blue green colonies

Detection limit of Compact Dry CF is between 1 – 300 cfu/plate.



From backside of the plate, count the number of colored colonies appeared in the medium.  
White paper placed under the plate can help to count colonies easier.