

# EL-SGD 43-ATP

Four-Channel Temperature Data Logger with 4.3" Capacitive Touch Display



EL-SGD 43-ATP is a four-channel temperature data logger with real-time readings, trend graphing and data analysis tools.

The EL-SGD 43-ATP is a four-channel temperature data logger based on the PanelPilotACE platform. The product includes a 4.3" panel mounted display module with capacitive touch screen, a four-channel thermistor temperature board and compatible temperature probes. The user interface comprises an advanced logging application which shows real-time readings for up to four temperature channels, live trend graphs and access to a suite of real-time data analysis information.

The logger can store up to 100,000 readings per channel at sample rates from 15 seconds up to 12 hours. Data can be downloaded via USB using our free Device Utility software, which is available from: [www.filesthrutheair.com/support](http://www.filesthrutheair.com/support)

For advanced users, the interface can be extensively customised using the free drag-and-drop PanelPilotACE Design Studio software.

Each EL-SGD 43-ATP includes:

- 4.3" PanelPilotACE display with mounting kit (SGD 43-A)
- Four-channel thermistor add-on board (S43-TP)
- 4 x 1m thermistor probe with 3.5mm plug (EL-PROBE2-1.0M-TP)
- Mini USB cable (CABLE USB A-MF)

## Specifications

<b>Supplied probe measurement range</b>	-40°C to +125°C (-40°F to +257°F)
<b>Internal Resolution</b>	0.01°C (0.01°F)
<b>Temperature Accuracy</b>	±1.0°C (±1.8°F)*
<b>Number of Readings (per channel)</b>	100,000
<b>Logging Rate</b>	15 seconds to 12 hours
<b>Number of Channels</b>	Up to 4
<b>Outside Dimensions</b>	119.3 x 79.8 x 31.3 mm (4.7 x 3.1 x 1.2 in)
<b>Communications Protocols</b>	USB

\* Between -5°C and 40°C without offset calibration. Between -40°C and +125°C with offset calibration applied.



[www.filesthrutheair.com](http://www.filesthrutheair.com)  
FilesThruTheAir™ is a trademark of Corintech Ltd.



# EL-SGD 43-ATP

Four-Channel Temperature Data Logger with 4.3" Capacitive Touch Display



## Operating Modes

The EL-SGD 43-ATP can be configured for one, two, three or four channel temperature data logging in either celsius or fahrenheit.

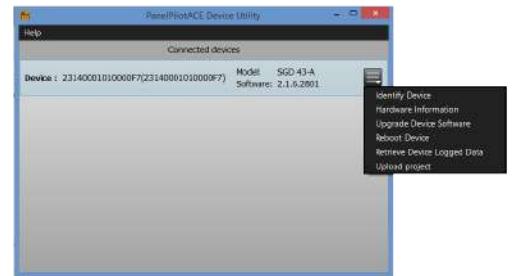
Function	3.5mm SKT	Configuration
Channel 1	NTC1	1, 2, 3 or 4 channel operation
Channel 2	NTC2	2, 3 or 4 channel operation
Channel 3	NTC3	3 or 4 channel operation
Channel 4	NTC4	4 channel operation only

## Software

### Device Utility

Data download, device updates and programming of the module is completed using the free Device Utility software available from: [www.filesthrutheair.com/support](http://www.filesthrutheair.com/support)

Data is downloaded in comma separated variable format which can be imported into spreadsheet packages for graphing and further analysis.

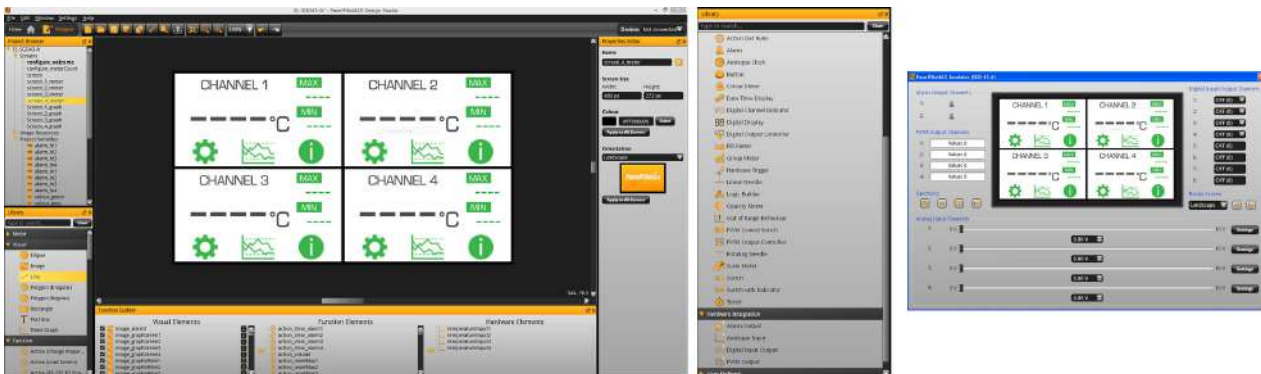


### Retrieving Logged Data

The EL-SGD 43-ATP is configured as a USB slave. To retrieve logged data, connect a PC or laptop to the USB connector on the rear of the unit and use the Device Utility software to select and extract logs as .txt files.

### Design Studio Software

The PanelPilotACE Design Studio software provides tools for advanced users who wish to fully customise the data logging functionality of the module. Visit [www.filesthrutheair.com/support](http://www.filesthrutheair.com/support) or [www.youtube.com/panelpilot](http://www.youtube.com/panelpilot) for further information including learning materials on getting started with this powerful drag-and-drop software suite.



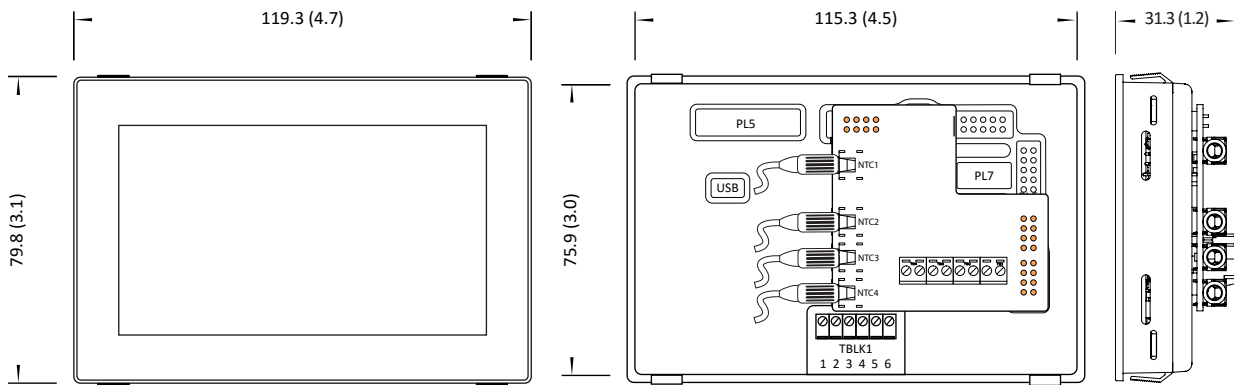
# EL-SGD 43-ATP

Four-Channel Temperature Data Logger with 4.3" Capacitive Touch Display



## Dimensions and Mounting

All dimensions are in mm (in)



The orange colour pins on the rear elevation (above-middle) show the correct location for the S43-TP temperature board.

## Panel Cut-Out and Fitting

The panel cut-out is 117.0 x 78.0mm (4.6" x 3.07").

There are two mounting methods:

The first uses clips that protrude from the plastic assembly and is suitable for panels between 1 and 3mm (0.04" and 0.12") in thickness.

The second method uses a rear mounting plastic bracket featuring grub screws for a more secure and adaptable fit. This second mounting method is suitable for panels between 0.5 and 4.0mm (0.01" and 0.15") in thickness.

